

Product Catalog

Through continuous development and innovation, Shanghai Zhuoou Construction Decoration Engineering Co., Ltd (Hereinafter referred to as "Zhuoou") has made continuous technological innovation to develop new materials. Because of its good decorative performance and green environmental protection, the new materials can well meet the needs of all kinds of buildings, and can realize the utilization of solid waste resources. The use of building solid waste instead of some natural stones can improve the utilization rate of building solid waste. The product system is improving day by day, and the application field of new material products continues to expand, covering flat plate, line, sculpture, 3D printing, reinforced stone, art landscape, UHPC, stone, coating, aluminum doors and windows, etc.

Through the continuous reuse of products, the total amount of waste discharged shall be reduced as much as possible, and the economic, environmental and social benefits shall be achieved, so as to make contributions to the establishment of a "waste free city". Therefore, this material is an ideal choice for architecture and designers, and is widely used in all kinds of buildings. The application of this material in cement adds slag powder and other wastes, while enhancing the strength and other properties, it can realize the waste utilization and development of energy-saving buildings; with the combination of prefabricated buildings, it can realize the integration of decoration and structure, improve the architectural beauty and use performance; increase the research and development of GFRC in the restoration and restoration of ancient buildings and cultural relics, and truly reproduce the original appearance of buildings with modern technology; open Develop new products that can replace natural stone materials, protect the natural environment and avoid the exhaustion of ecological resources; learn from international advanced technology and experience, continue to improve the performance of our GFRC products and strive to exceed European standards;

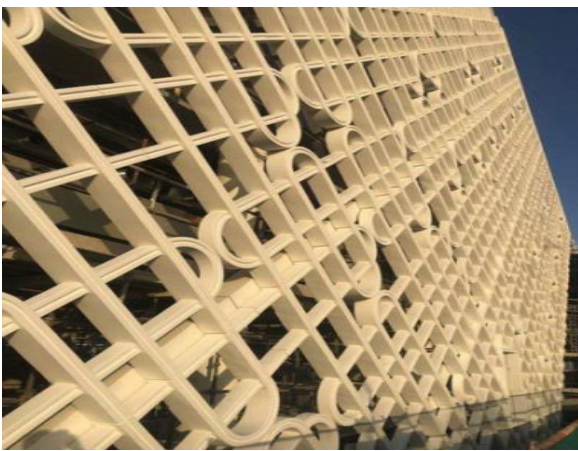
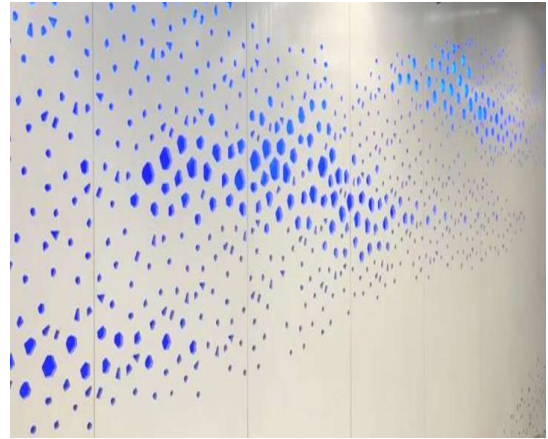
Inherit world culture, integrate classical architecture and modern architecture, and create characteristic style architecture. It has rich shapes and is not limited by shapes. It can make products present different effects through different processes, especially suitable for large

hyperbolic and nonlinear architectural design. Light weight, high strength, super durable, class A1 fire-proof material; the product is renewable material, anti pollution, non radiation, conducive to environmental protection; the installation method is simple and diverse, conducive to site construction, short construction period.

1. New material UHPC

Cement based concrete materials with super mechanical properties, high toughness, super durability, and excellent pouring and forming properties. UHPC not only brings a better visual integrity to the building, but also ensures the long-term visual and use effect of the building skin with ultra-low water absorption and super durability. It becomes the first choice material to realize nonlinear modeling. It can be widely used in different fields such as curtain wall and facade, architectural aesthetics and landscape prefabricated components, interior decoration and decoration, concrete furniture, home furnishings and handicrafts. UHPC's ultra-high performance makes its application in structure, decoration and other aspects more save material consumption than other concrete materials, and reduce the self weight of buildings or components, so as to reduce carbon dioxide emissions, while excellent durability can reduce the maintenance and repair of buildings and components, and achieve a greener and energy-saving building in the whole life cycle of buildings.

UHPC performance indicators are significantly better than ordinary concrete, in building decoration, building skin, creative building and other aspects have rich expression.



2. 3D printing products

The product has the characteristics of one-time molding and environmental protection, breaking through the limitations of traditional processing and manufacturing technology and space, and has advantages in personalization, efficiency, cost, convenience, materials, precision, environmental protection and other aspects. The characteristics of one-time forming and adding layer by layer make the manufacturing process basically free of material waste, and can save at least 40% of energy; it can print out the high-cost curve buildings that are difficult to build in other ways; it can print out the concrete buildings with higher strength and lighter quality.



3. Art landscape

The indispensable elements in garden and landscape decoration are diversified in forms. Its form is often informal, exquisite and dexterous. It can change its form of expression in order to meet the needs of the overall environment of landscape design renderings. It can give people different visual, tactile and psychological changes through different texture.



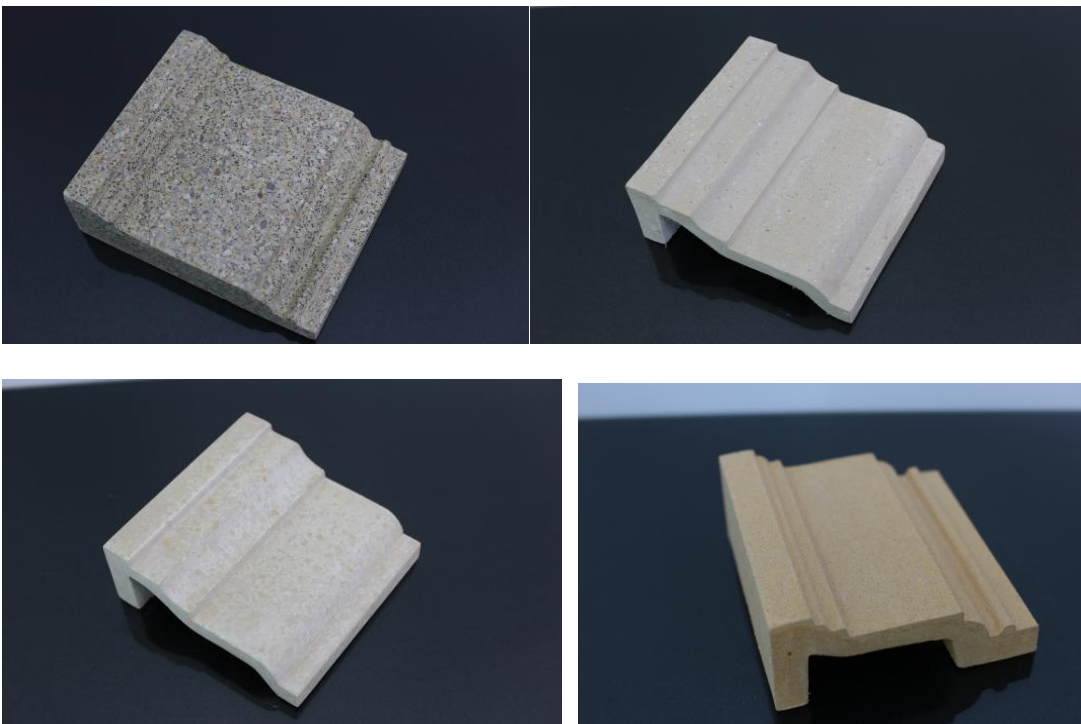
4. Sculpture

Sculpture is the finishing touch in the landscape, which plays a good role in the decoration of space. It has various shapes, infinite plasticity and strong artistic expression of details.



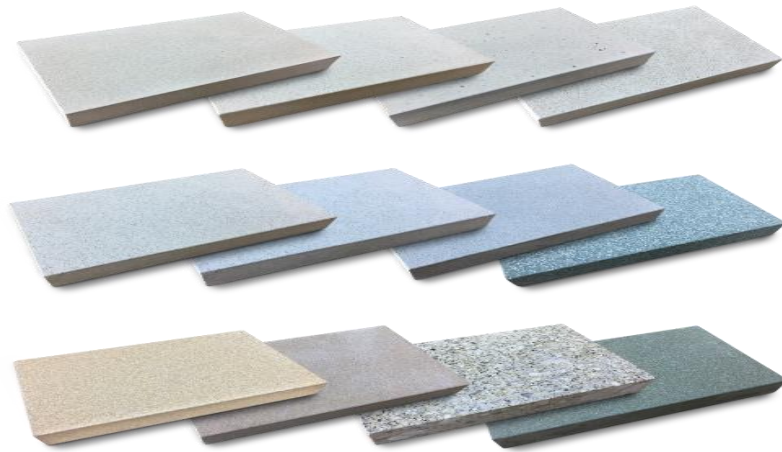
5. Lines

Generally, it is used outdoors to increase the overall aesthetic effect of the building. It is mostly used for cornice line, coping line, waist line, etc. it is also a kind of imitative European style decorative line, which is smooth, beautiful and has no gap between the lines.



6. Plate

The single block has large area and various colors. It can be any size, strong and beautiful.



7. Rockery

It not only adds a beautiful landscape to the garden, but also enables us to feel the spirit of the mountains and clouds at a close distance.



8. Floor tiles

Square brick is widely used in leisure square, municipal engineering, landscaping, and public occasions with a lot of people flow because of its super wear-resistant, antiskid and good decoration effect. It has rich colors and can be assembled into various patterns, and plays an important role in modern urban construction.



9. Urban furniture

With the continuous development of the city, people have a higher demand for the quality of public space. The design of "urban furniture", a functional instrument in the city, tends to be diversified, and the shape and size of the curve increase the use comfort. Urban furniture has become a kind of public art. It establishes an organic and harmonious overall relationship with urban space and environment to meet people's needs and make the city look more charming and artistic.



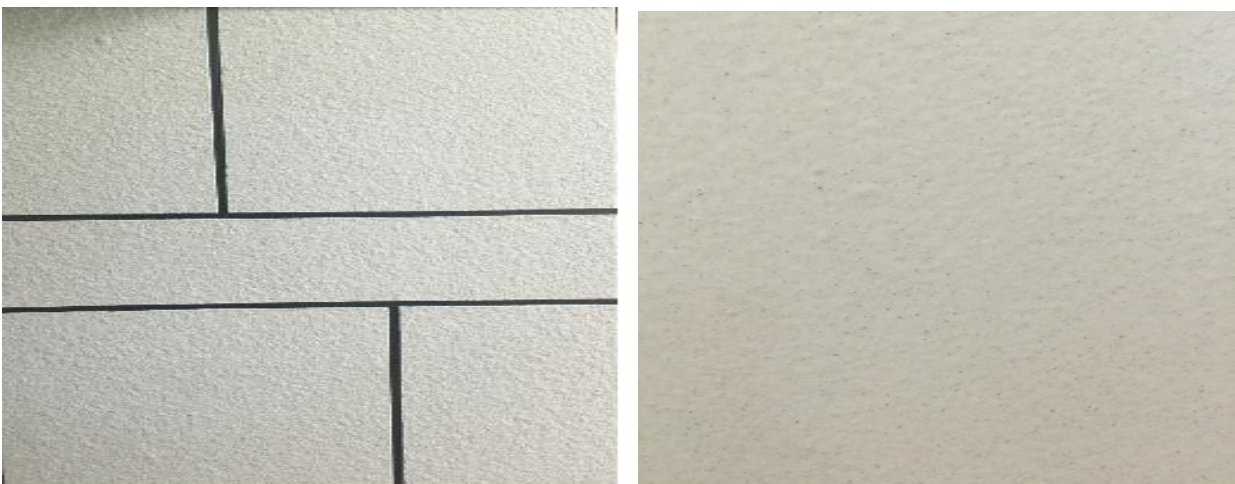
10. Reinforced stones

The shape can be customized, and various texture modeling products can be made according to the needs. The finished product is almost the same as the real product, but the price is less than half of the stone cost. At the same time, it can also meet the initial architectural style requirements of the owners and designers.



11. Coating

The color is natural and bright, the texture looks like stone, and the facing is hard like stone, giving people a solemn and elegant visual experience. Achieve the same decorative effect as natural granite and marble.



12. Stone

Natural material, bright and crystal, hard and permanent, noble and elegant.



13. Terrazzo

Extremely smooth, strong curve expression, outstanding decorative effect, beautiful and generous. Highlight the prevailing modern art decoration style.



14. Aluminum plate, doors and windows

Doors and windows have the function of protection and decoration. The shape, material and color of the window cover have a very important influence on the decoration style of the building. The curtain wall aluminum plate has unique texture, rich color and lasting, and its appearance and shape can be diversified, and it can be perfectly combined with glass curtain wall materials and stone curtain wall materials. Its appearance is perfect, its quality is good, and its weight is light.



15. Iron art

The iron art of traditional decoration style is widely used in the exterior decoration, interior decoration, furniture decoration and environment decoration with new content and life. It plays an important role in modern decoration because of its distinct characteristics, simple style, simple and practical technology.



16.TCP

Theme cement mortar (TCP). Also known as cement direct plastic. TCP is a kind of building material with strong plasticity. It is a sculpture made of cement plastic stone technology. The inner part is welded with steel framework and the outer part is molded with cement mortar (or sculpture mortar). TCP is a one-time molding, the skeleton welding is completed, the mortar molding is completed, the texture molding is completed.

TCP is mainly used in theme park, amusement park, ecological park and other large outdoor leisure sites, generally with a specific theme culture atmosphere, the overall service life is long, not easily affected by the environment.



