



Excel Precast Pte Ltd



*Prefabricated  
Bathroom Unit*



# Prefabricated Bathroom Unit

**A**s a reputable and reliable precaster in Singapore, Excel Precast Pte Ltd possesses in-depth knowledge of PBUs and their various critical design parameters.

Our mission is to provide the client a system of PBU production that focuses on: durability, reliability, quality, technically sound, and cost-effectiveness, hence delivering total satisfaction for the client.

## Durability

Using proven precast concrete technology, Excel Precast Pte Ltd is down-to-earth in its approach to ensure durability in all of its PBUs. With precast concrete as its main structural body, the PBU is made to last. It will not corrode, neither will it rust. This system will guarantee peace of mind for the client choosing PBUs from EXCEL PRECAST Pte Ltd.

## Reliability

We take pride in managing the production team to provide an integrated system of manufacturing and installation of all the various components that make up a bathroom, from the structural precast concrete body, to the internal plumbing system, to the tiling process, to the carpentry works etc.

Such a system requires a complete know-how and understanding of making a PBU off-site in a sheltered factory. We take manufacturing to a new height, where all key trades are working in unison, all key design parameters are accounted for, and all processes are monitored. Such reliability is crucial when delivery schedule to the job site is critical. With our system of PBU production, we removed essentially the many variables that lead to delays and uncertainty.

## Quality

Our PBUs will achieve a level of quality in its workmanship which is second to none. Such claims can be seen by our mock up units. Our core team of specialized workforce are highly trained in all aspects of the PBU production chain, leading to PBUs that are free from defects, something that is unlikely when individual contractors are called upon to work at the job site to perform their own trades.

## Technical Expertise

EXCEL PRECAST Pte Ltd's knowledge and experience in the PBU field is exemplary. Our PBU-team has had experience in various projects which uses PBUs. We have the vision to continually improve on existing concepts, and inventing new ones. Proprietary features are often added into our PBUs for ease of installation at site. Developers, consultants and main contractors often accept our suggestions and opinions for PBUs because our in-depth know-how of the product. Our production team is dedicated to ensure defect-free PBUs, adopting modern management systems in the PBUs' production process.

## Cost-Effectiveness

Our PBUs will often be cost-effective, even as we are able to provide innovative solutions to ensure quality, durability and reliability. Our manufacturing system can cater for materials to be supplied by the clients, where a whole new separate system of managing customer-supplied-items are in place. Our PBU range offers cost-no-object luxurious light weight models utilizing exotic materials, to the affordable heavier precast concrete models, with or without customer-supplied-items options.







### Make The Right Choice

It makes perfect choice to adopt PBUs in a residential development as the call for productivity only gets more intensive in recent years. Singapore's Building & Control Authority (BCA) has been actively championing higher productivity by encouraging the use of new products and methodologies.

The use of PBUs is one key component in achieving the higher productivity. With so many trades in one small area, the bathrooms are the most challenging and difficult areas to coordinate at site. However, when such activities are managed off-site, better quality and higher turn-around time can be attained. When choosing a partner to supply PBUs, it is important to select the team that has all these attributes:

- ◆ Durability
- ◆ Reliability
- ◆ Quality
- ◆ Technical Expertise
- ◆ Cost Effectiveness

It takes finesse, insight, and know-how, to produce workable PBUs; not just a production facility. We at Excel Precast Pte Ltd would like to assure you that our PBUs will satisfy all of your requirements. We look forward to have a no obligation consultation with regards to the implementation of PBUs for your residential developments or building projects. Selecting us is clearly the right choice.



Excel Precast Pte Ltd

**Head Office**

16 Kaki Bukit View, Kaki Bukit Tech Park II, Singapore 415952

Tel: +65 6863 0895 Fax: +65 6863 4182

Email: [sales@excel-precast.com.sg](mailto:sales@excel-precast.com.sg)

[www.excel-precast.com.sg](http://www.excel-precast.com.sg)







Excel Precast Pte Ltd

Excel Precast offers a full product and service package with the ability to design, detail and manufacture a diverse range of prestressed and precast products, and provide industry leading installation advice.



Excel Precast Pte Ltd

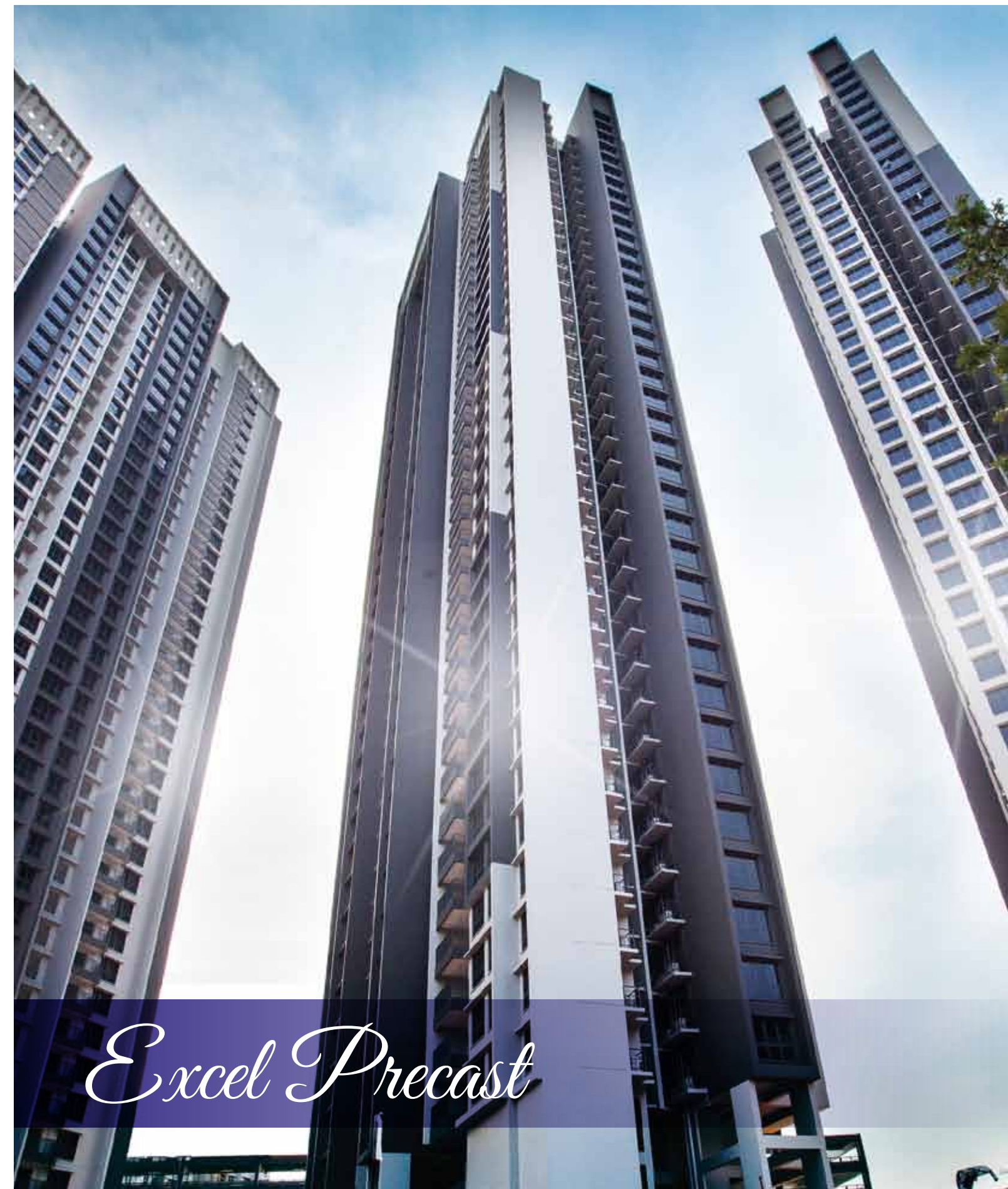
#### Head Office

16 Kaki Bukit View, Kaki Bukit Tech Park II, Singapore 415952

Tel: +65 6863 0895 Fax: +65 6863 4182

Email: [sales@excel-precast.com.sg](mailto:sales@excel-precast.com.sg)

[www.excel-precast.com.sg](http://www.excel-precast.com.sg)



*Excel Precast*



## Company Introduction

Excel Precast Pte Ltd was established back in 1999 and has been one of Singapore's premier manufacturers of precast concrete products.

Excel Precast thrives to incorporate the latest innovation and technology in order to constantly produce precast elements that are made of the highest quality. Excel Precast believes in establishing a long term business relationship with all of our clients and therefore we always prioritize our clients ahead of ourselves.

Excel Precast has production plants stationed both in Singapore and Malaysia and with a total production capacity of 15,000 m<sup>3</sup> per month, made us one of the largest precast manufacturers in Singapore.

Excel Precast had worked together with many different entities in the past and we have been involved in many different types of projects (Public Housing [HDB], Private Residential, Commercial, Institution, Military and Civil Engineering).

Excel Precast management system is certified to meet ISO 9001:2008, ISO 14001:2004 and BS OHSAS 18001:2007 standards.



## Building Information Modelling

Excel Precast Pte Ltd was among the first few in the precast industry in Singapore to adopt the use of the Building Information Modelling (BIM) for our design development.

BIM allows different stakeholders of a project to design, develop and visualize the adoption of different aspects of the precast elements required for the project. BIM aids productivity since design faults and potential project complications can be easily identified and resolved prior to the manufacturing and installation processes.



## Products

Excel Precast offers a wide range of high quality concrete precast products catering to different clients in the market. We also provide the service of customizing precast components, according to what our clients' requirements are.





## Past Projects

At Excel Precast, we have vast experience in managing all aspects of supply for major projects. Our team continue to ensure seamless technical support, on-time delivery of solutions to help our customers achieve successful outcomes for their projects. Excel Precast is proud to have been involved in many projects in Singapore, a selection of which is featured below.







Excel Precast Pte Ltd

#### Head Office

16 Kaki Bukit View, Kaki Bukit Tech Park II, Singapore 415952

Tel: +65 6863 0895 Fax: +65 6863 4182

Email: sales@excel-precast.com.sg

www.excel-precast.com.sg



Excel Precast Pte Ltd



*Prefabricated  
Prefinished Volumetric  
Construction* (PPVC)



As a reputable and reliable precaster in Singapore, Excel Precast Pte Ltd possesses in-depth knowledge of PPVCs and their various critical design parameters.

Our mission is to provide the client a system of PPVC design and production methodology that focuses on: durability, reliability, quality, technically sound, and cost-effectiveness, hence delivering total satisfaction for the client.

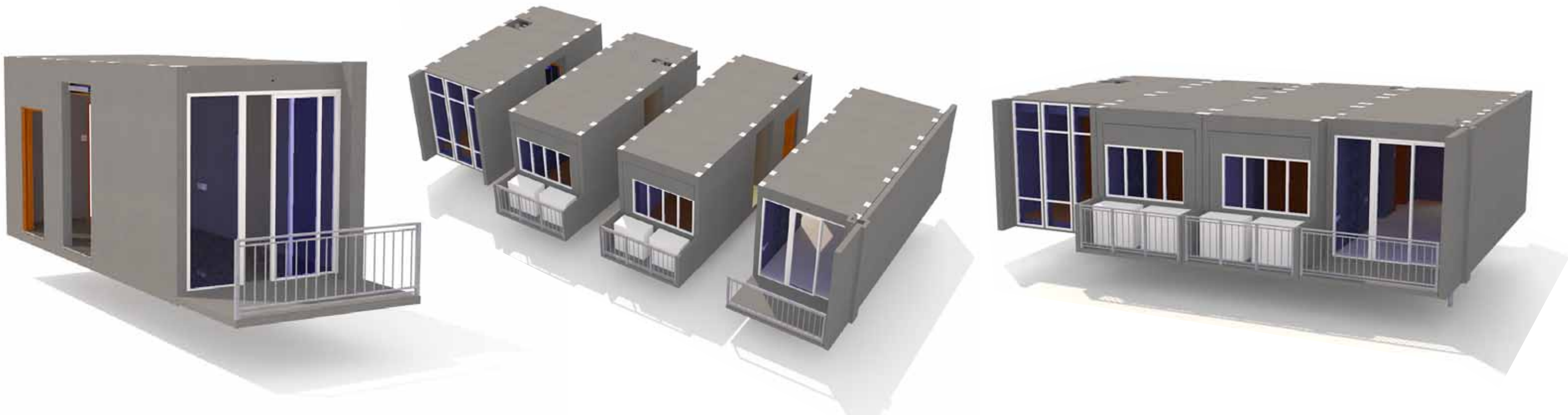
## WHAT IS PPVC?

Prefabricated Pre-finished Volumetric Construction (PPVC) is the construction method whereby complete flats or modules are fitted with its internal finishes, fittings and fixtures off-site. The completed flat or module would be sent to the site for installation once it is completed.

Singapore is renowned as one of the leading cities in the world because of the way the country thrives for continual innovation and improvement. Construction companies are constantly urged by the Singapore government to adopt the latest construction methods or trend that promotes greater efficiency and productivity in the construction sector.

During the Singapore Construction Productivity Week (SCPW) held in October 2015, the government outlined three measures aimed specifically to improve the productivity and efficiency of the construction sector. The government pointed out that, in order for productivity in the sector to increase, construction companies must place greater emphasis on achieving greater integration across its value chain and for prefabrication to be done in more prevalent manner. Lastly, the government highlighted the importance of raising construction quality of the workforce in order for the sector to improve as a unit.

The government is trying to reshape the construction sector by encouraging construction companies to adopt off-site manufacturing practices for on-site assembly. The government believes that by adopting Prefabricated Pre-finished Volumetric Construction (PPVC), the industry would be able to meet the desired productivity target set by the government.



## MAKE THE RIGHT CHOICE

Excel Precast Pte Ltd's PPVCs are concrete based. The choice of this material would yield the following advantages:

**Productivity**

**Least  
joining  
details**

**Most work  
done in  
factory**

**Easy  
Installation**

**Fully weather  
protected**

**Safety  
on site**

**Fire Safety**

**No Rust  
Issue**

**Easy to  
Maintain**

**Less noise  
and pollution  
on site**

**Satisfied  
Home  
Owners**